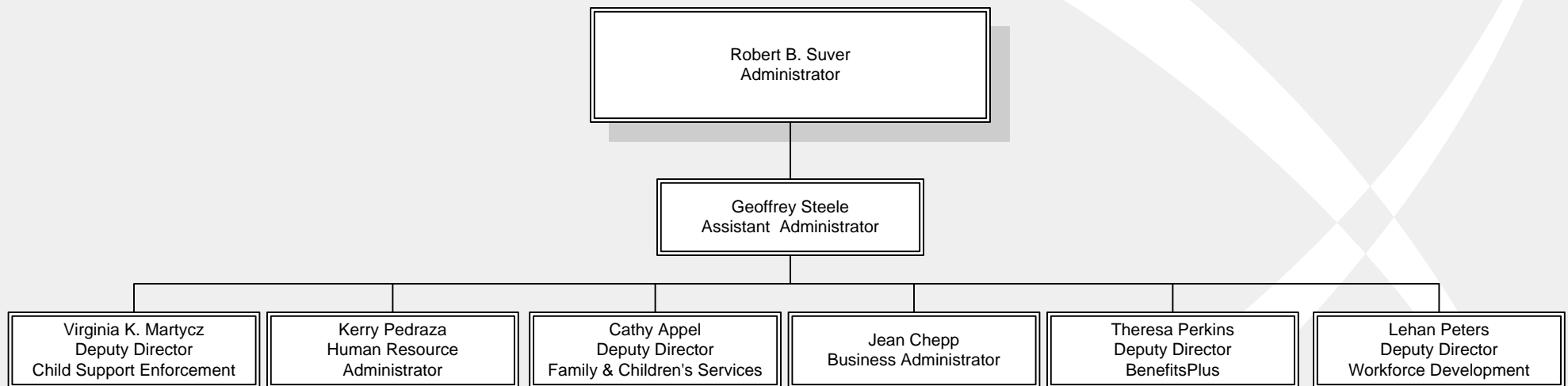
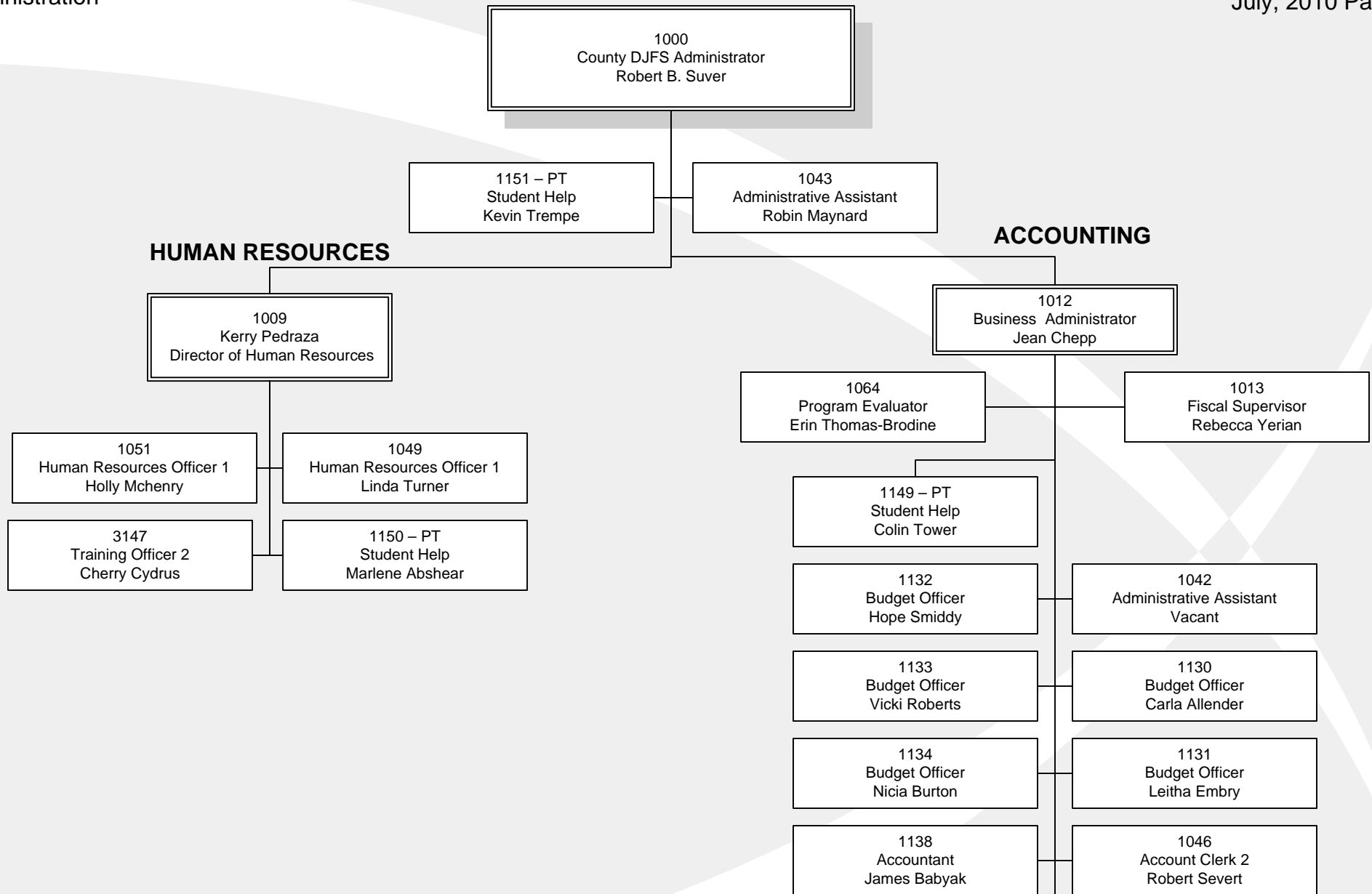


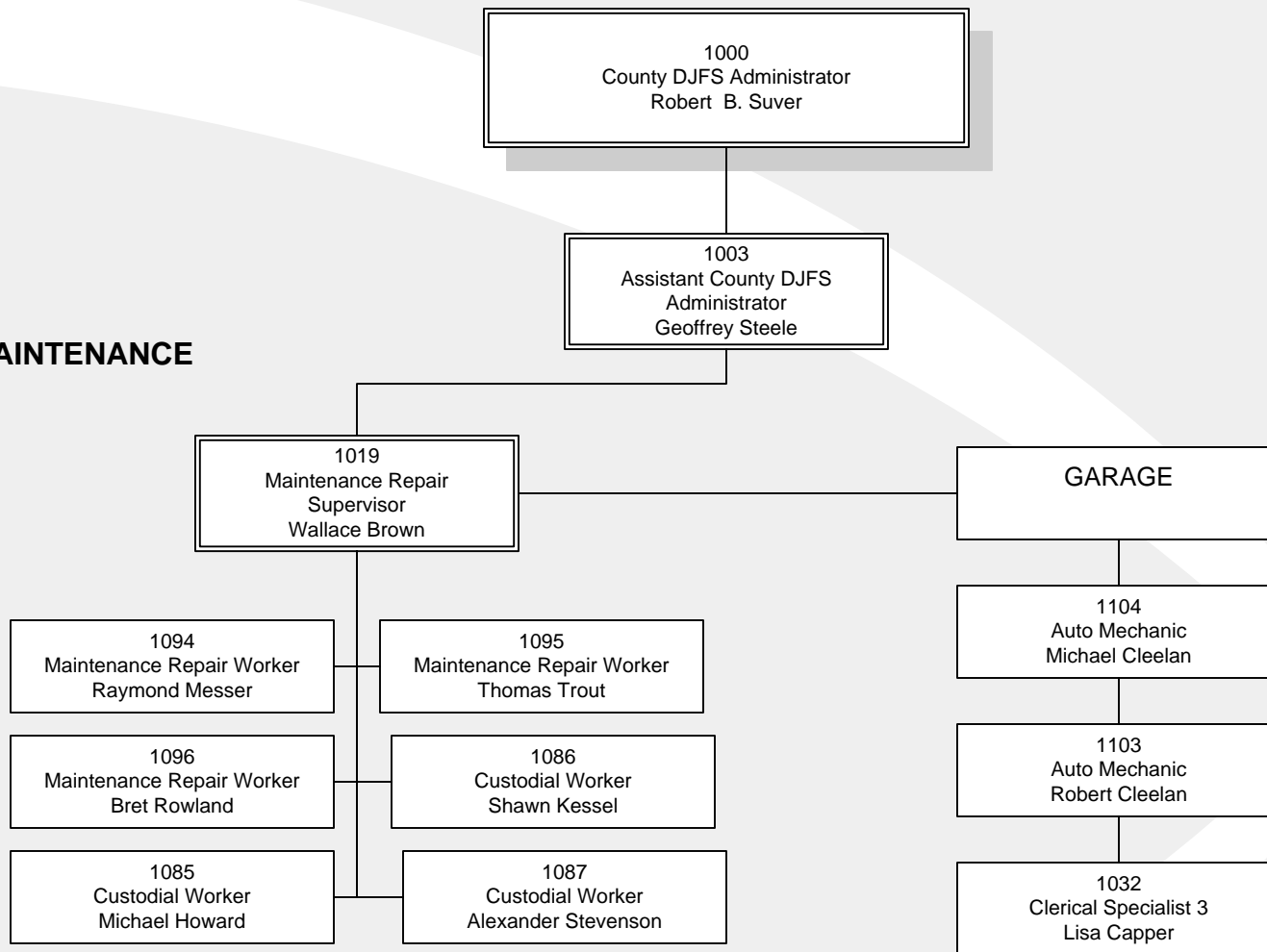
Job & Family Services of Clark County

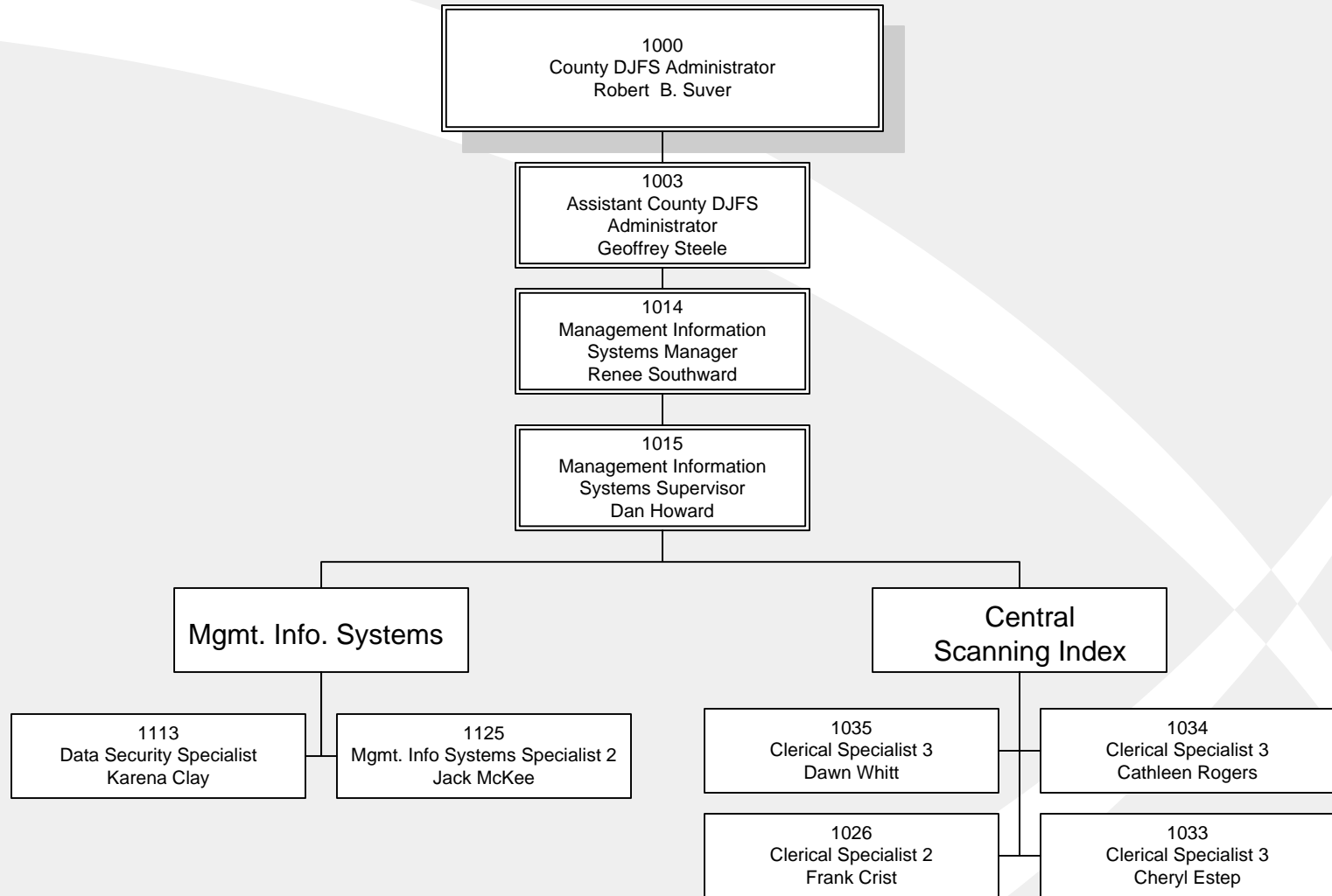
Administrative Table of Organization

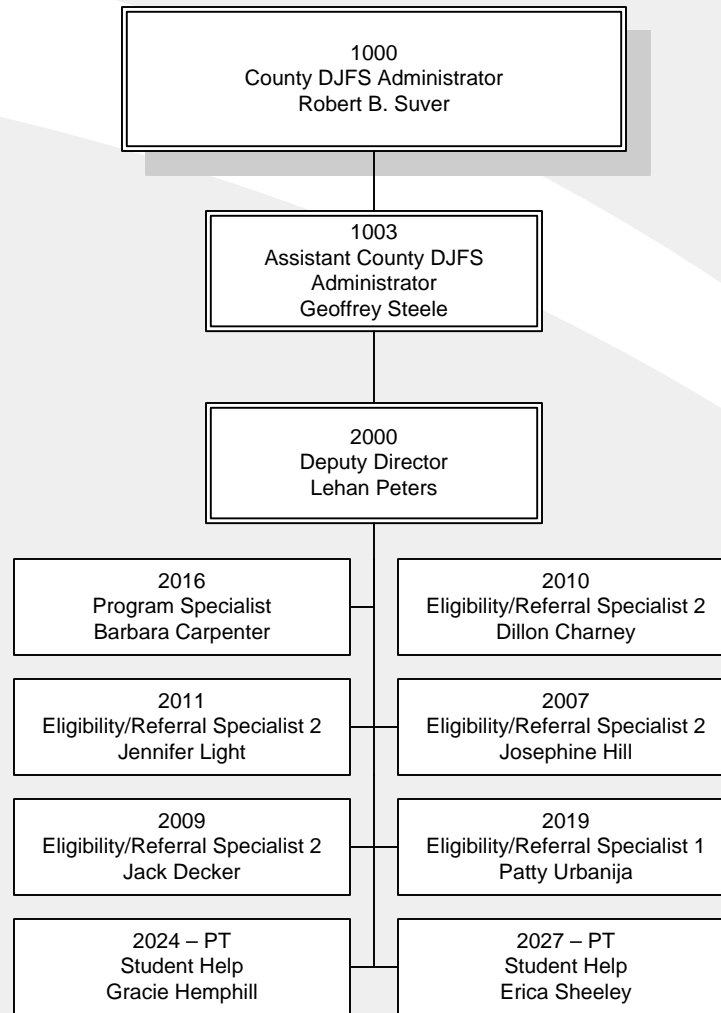


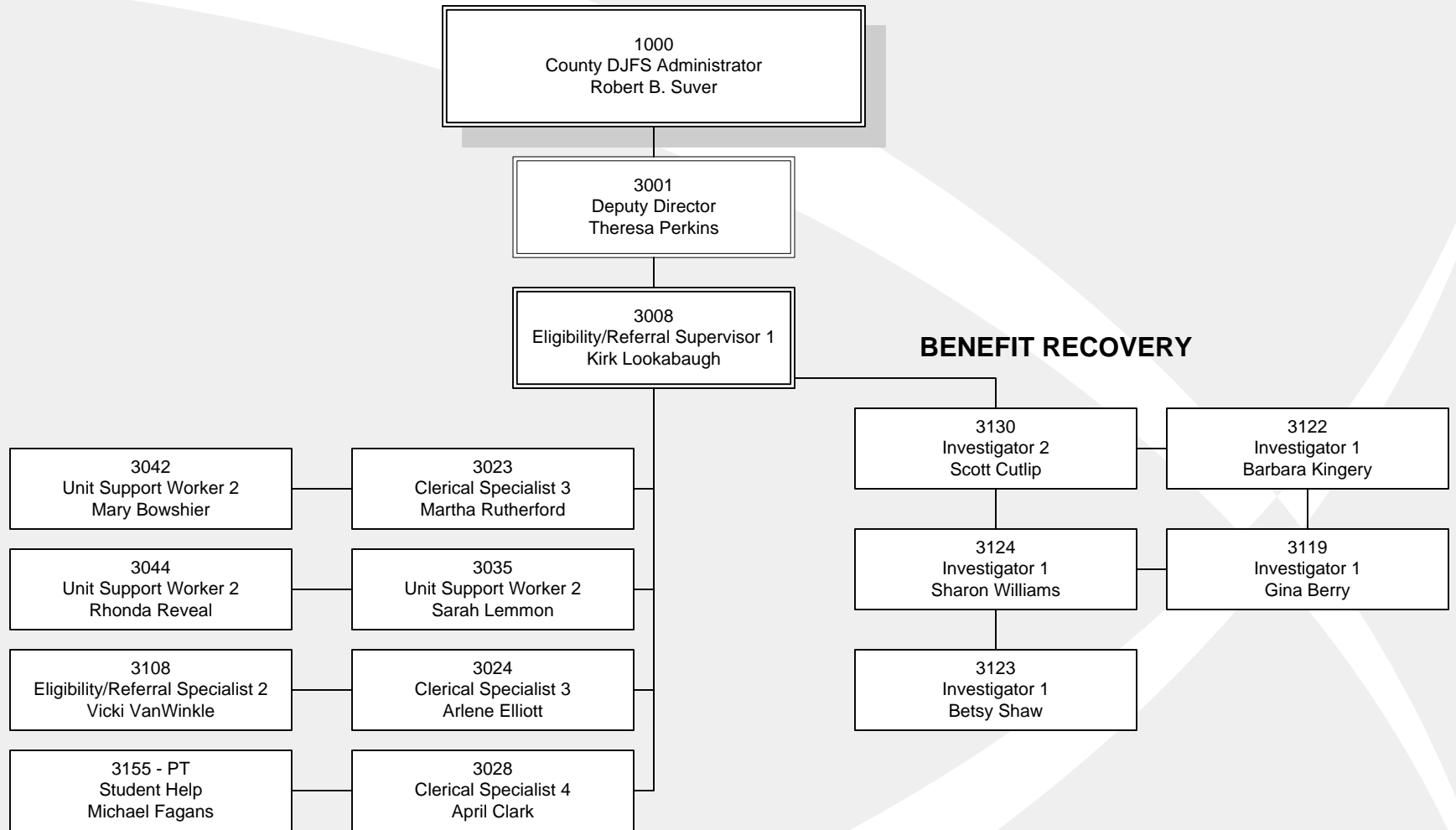


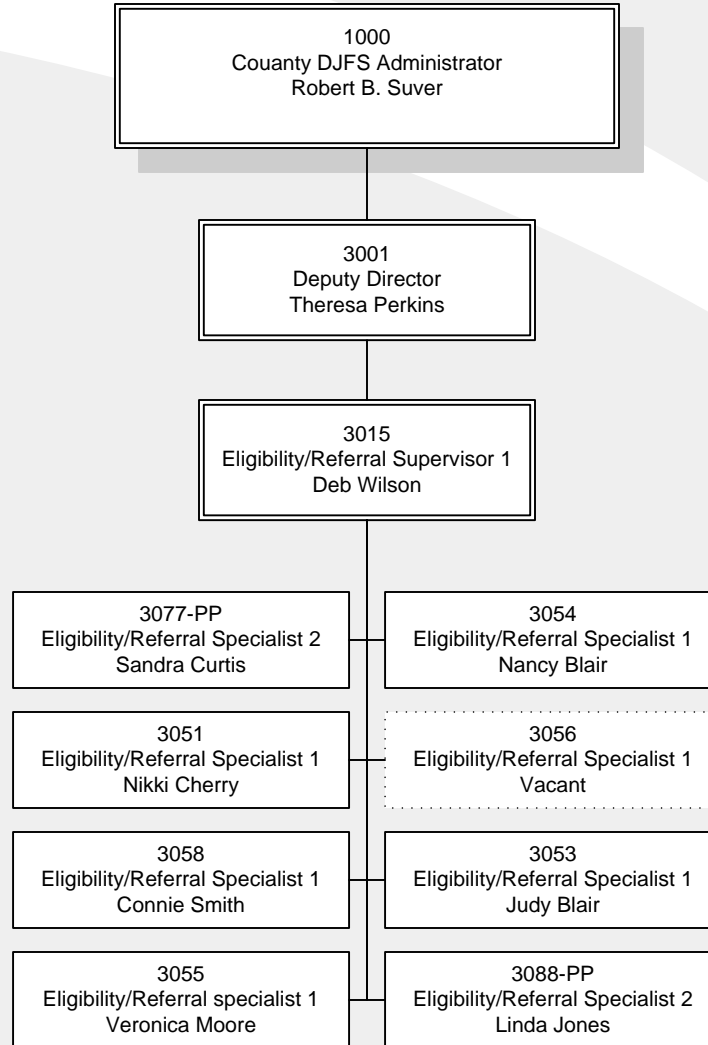
MAINTENANCE

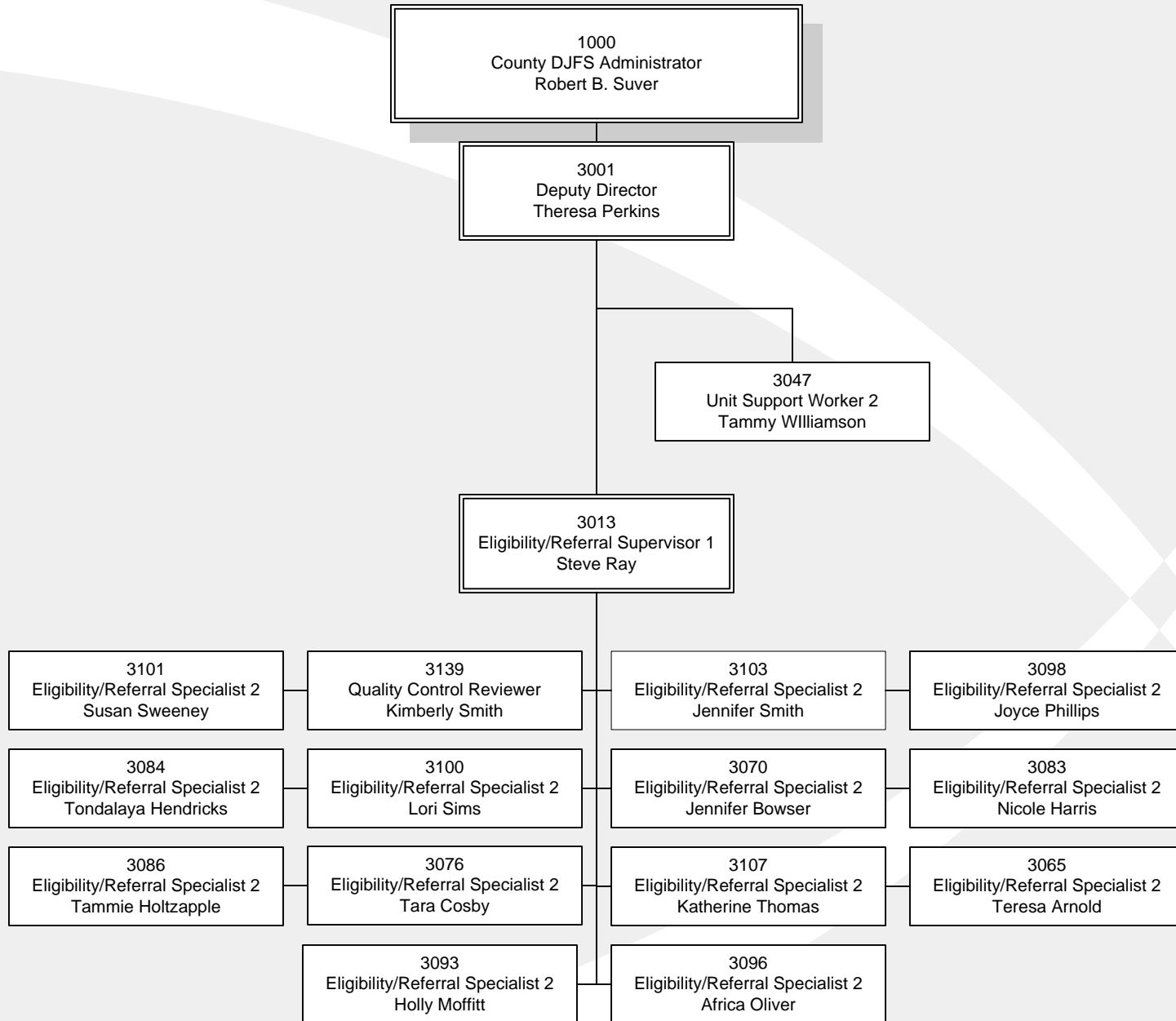


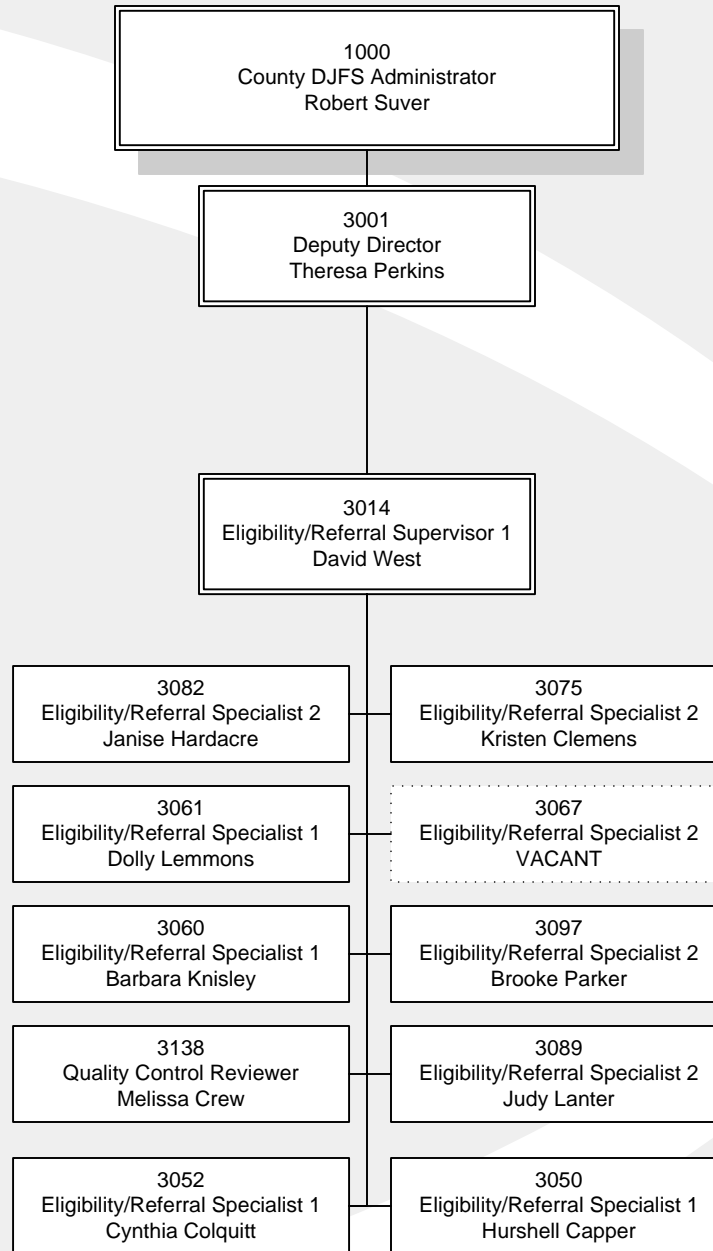


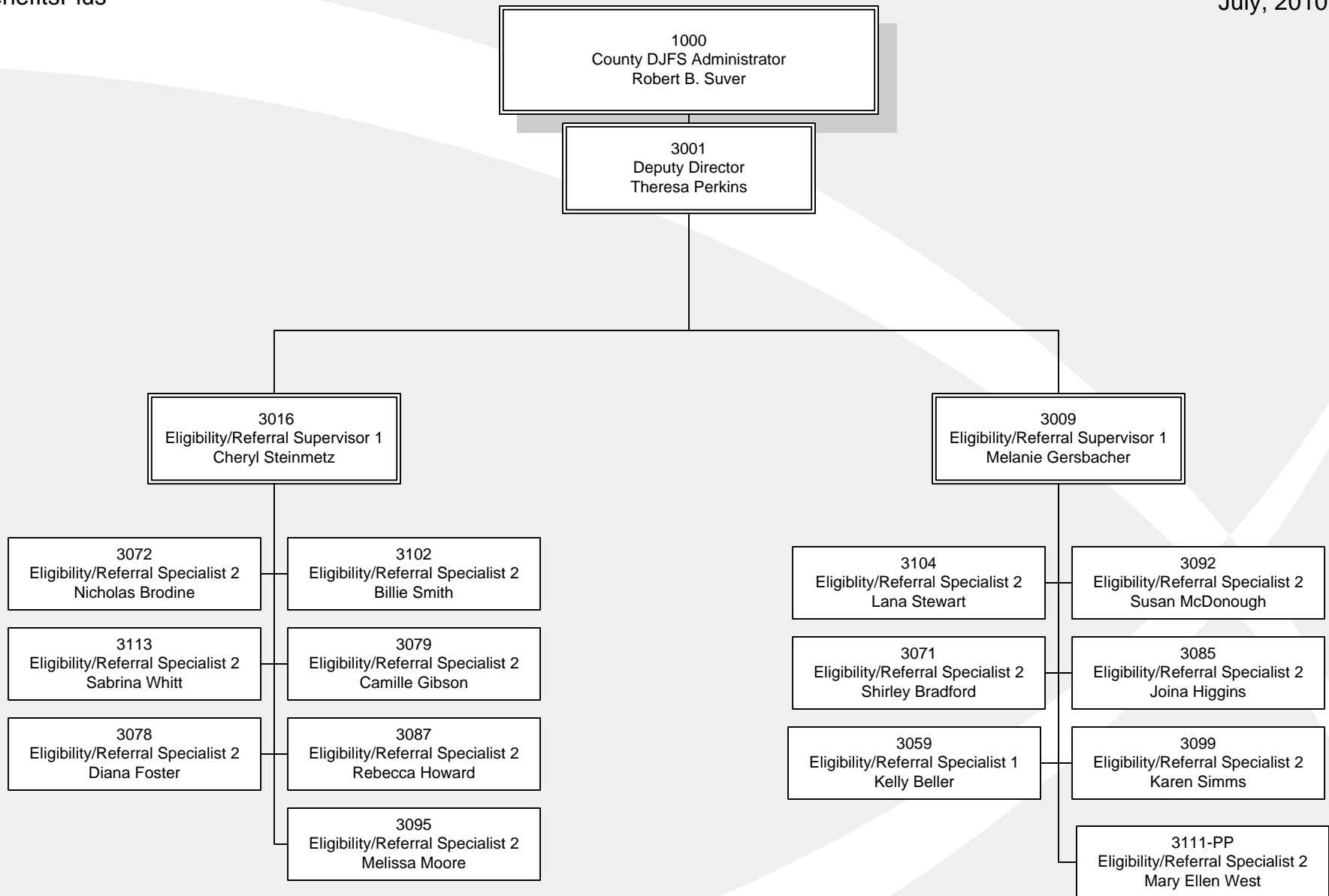


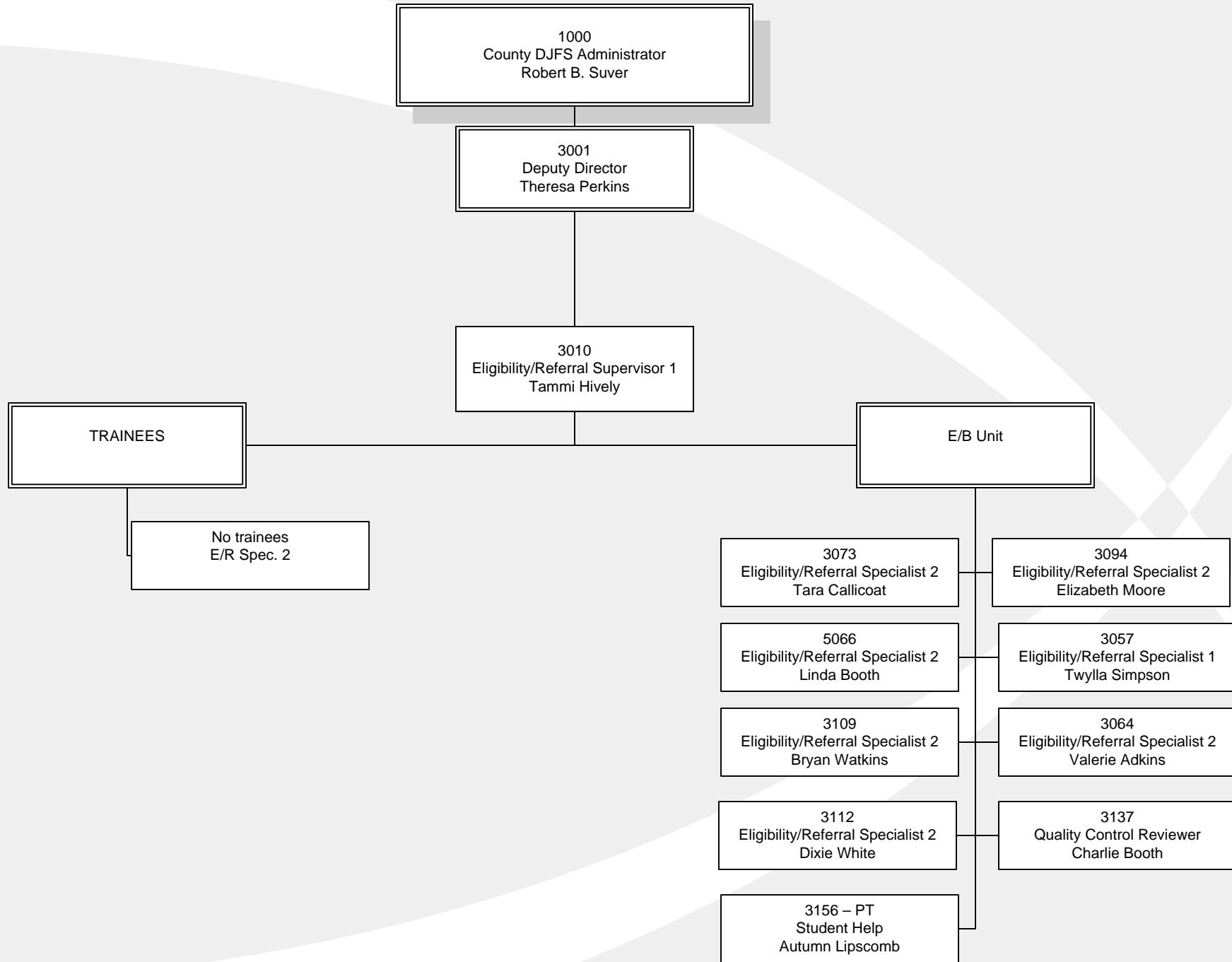


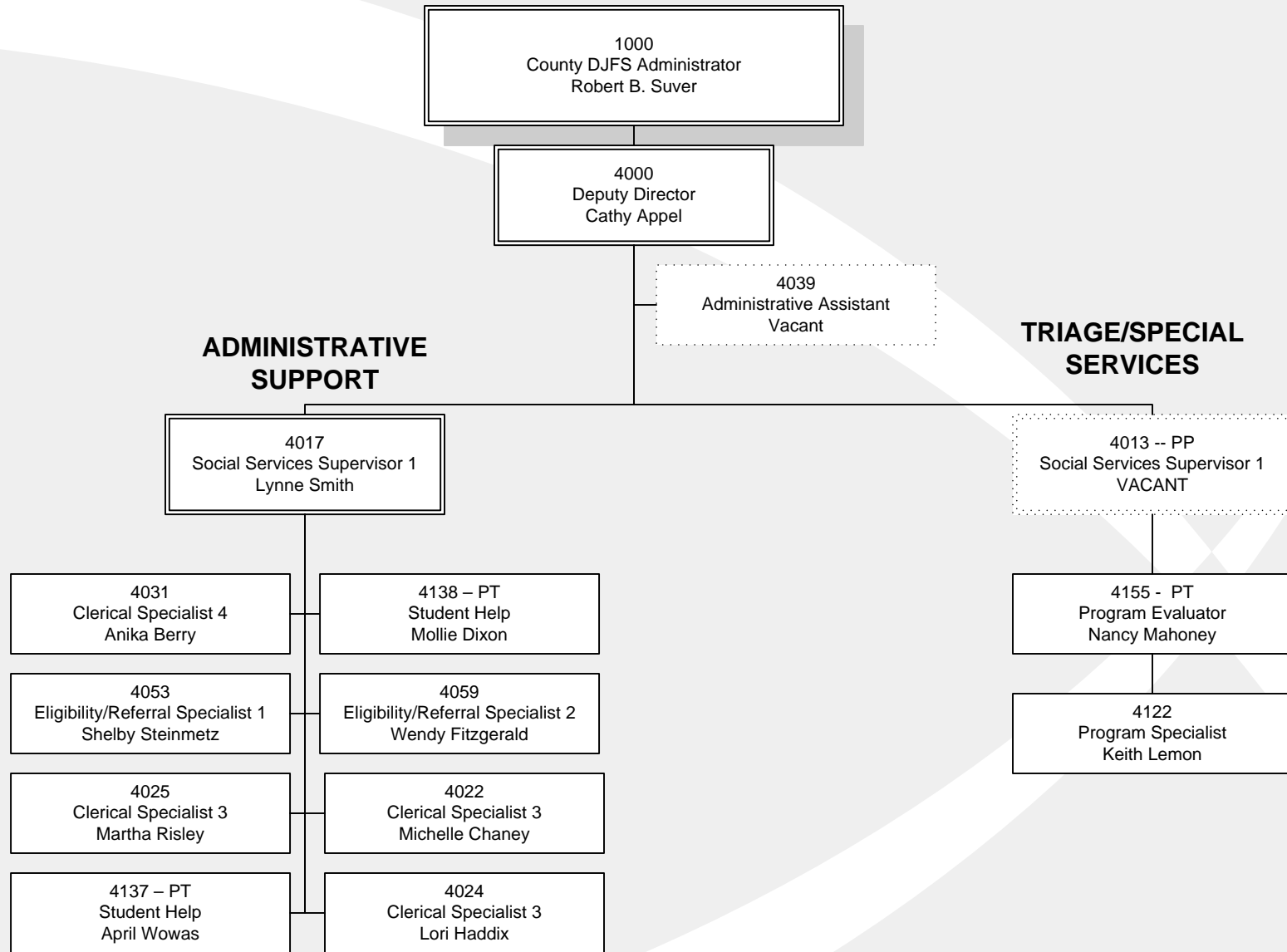


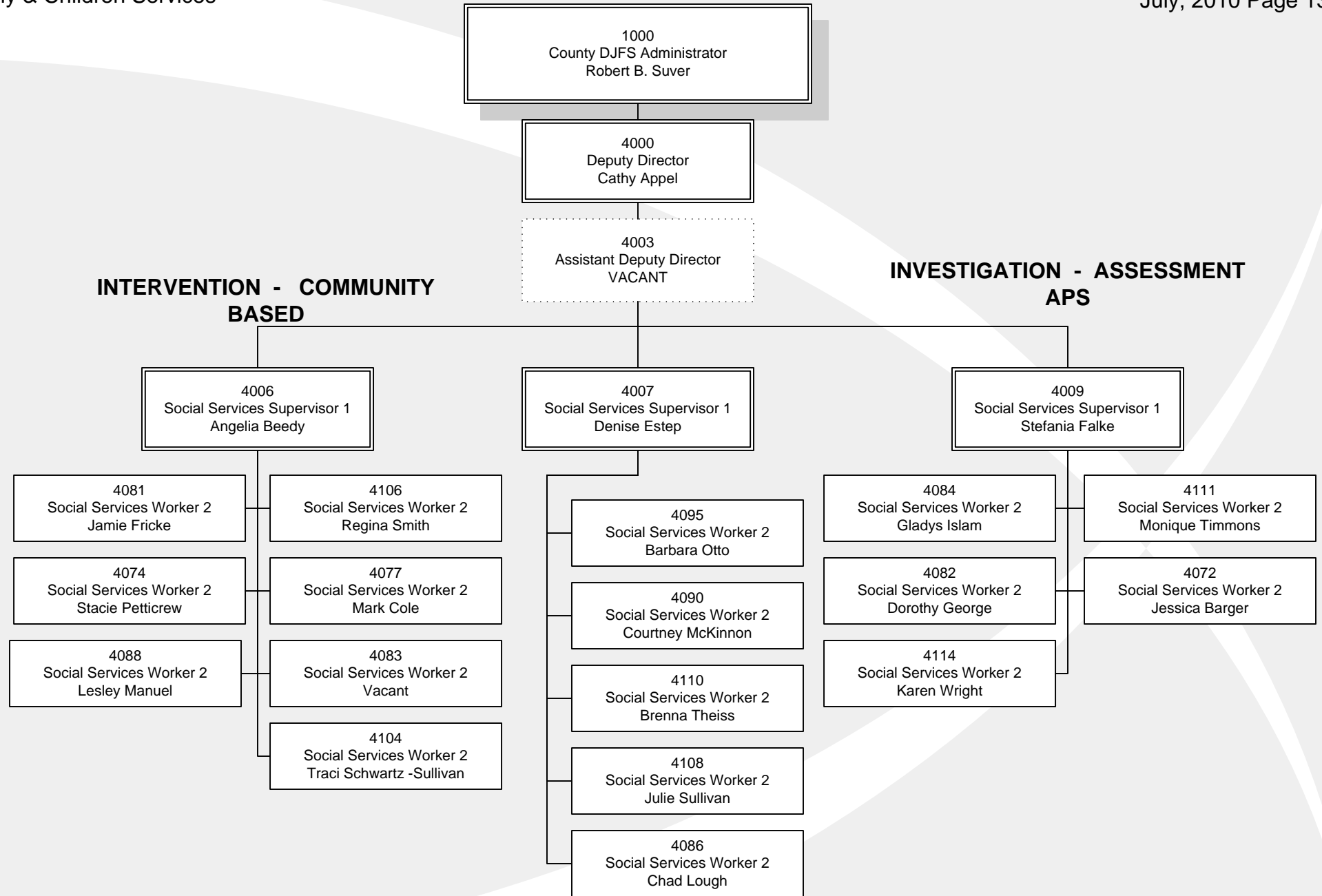










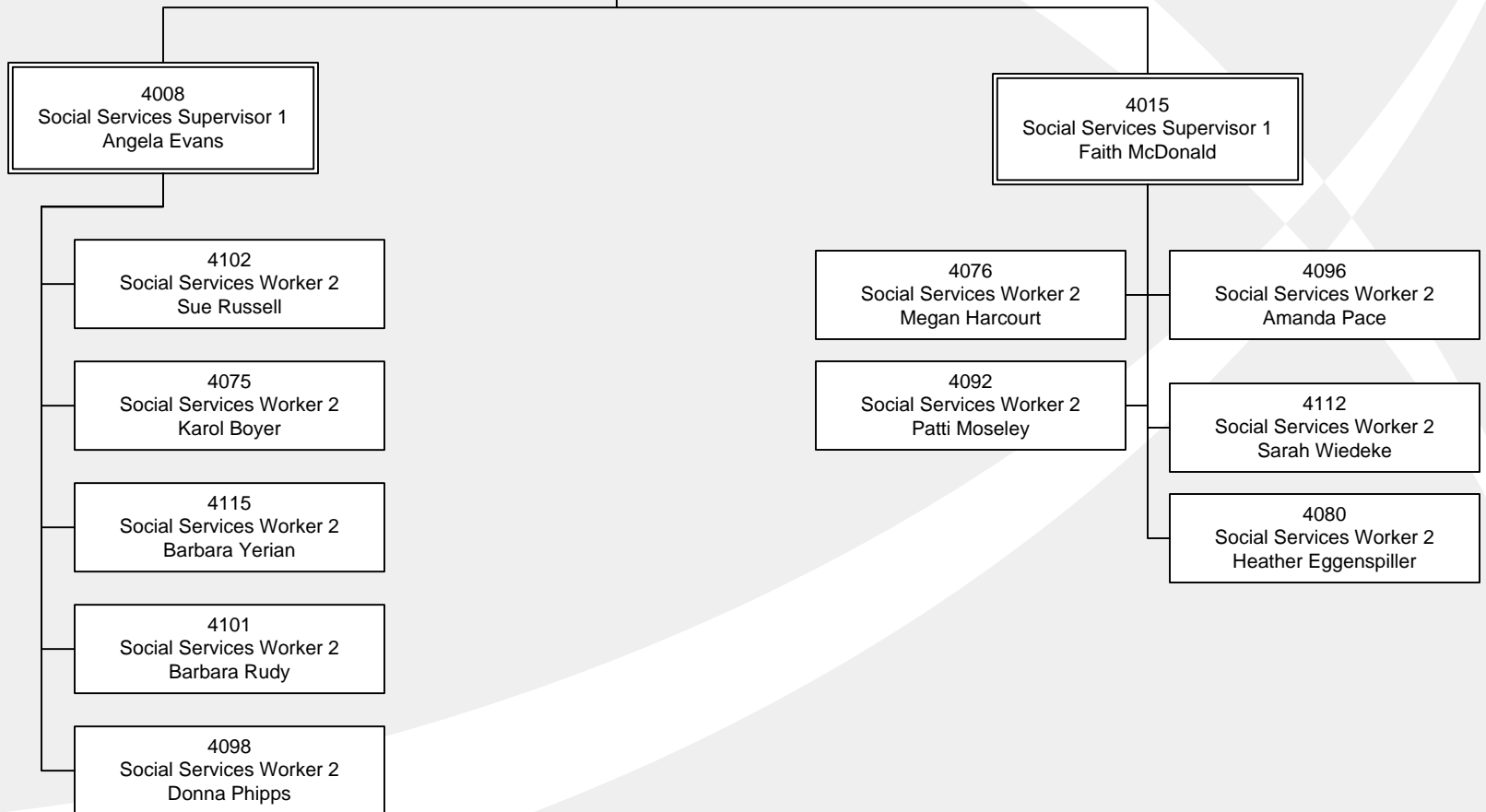


1000
County DJFS Administrator
Robert B. Suver

4000
Deputy Director
Cathy Appel

4003
Assistant Deputy Director
VACANT

INVESTIGATION - ASSESSMENT



1000
County DJFS Administrator
Robert B. Suver

4000
Deputy Director
Cathy Appel

4003
Assistant Deputy Director
VACANT

FAMILY SUPPORT SERVICES

4016
Social Services Supervisor 1
Kristie Heckman

4100
Social Services Worker 2
Janine Rouch

4107
Social Services Worker 2
Vacant

4129
Activities Therapist
Jerome Kynard

4065
Social Services Worker 1
Karen Slattery

4073
Social Services Worker 2
Denise Bell

4010
Social Services Supervisor 1
Wendy Holt

4085
Social Services Worker 2
Marsha Jenkins

4079
Social Services Worker 2
Kim Dysert

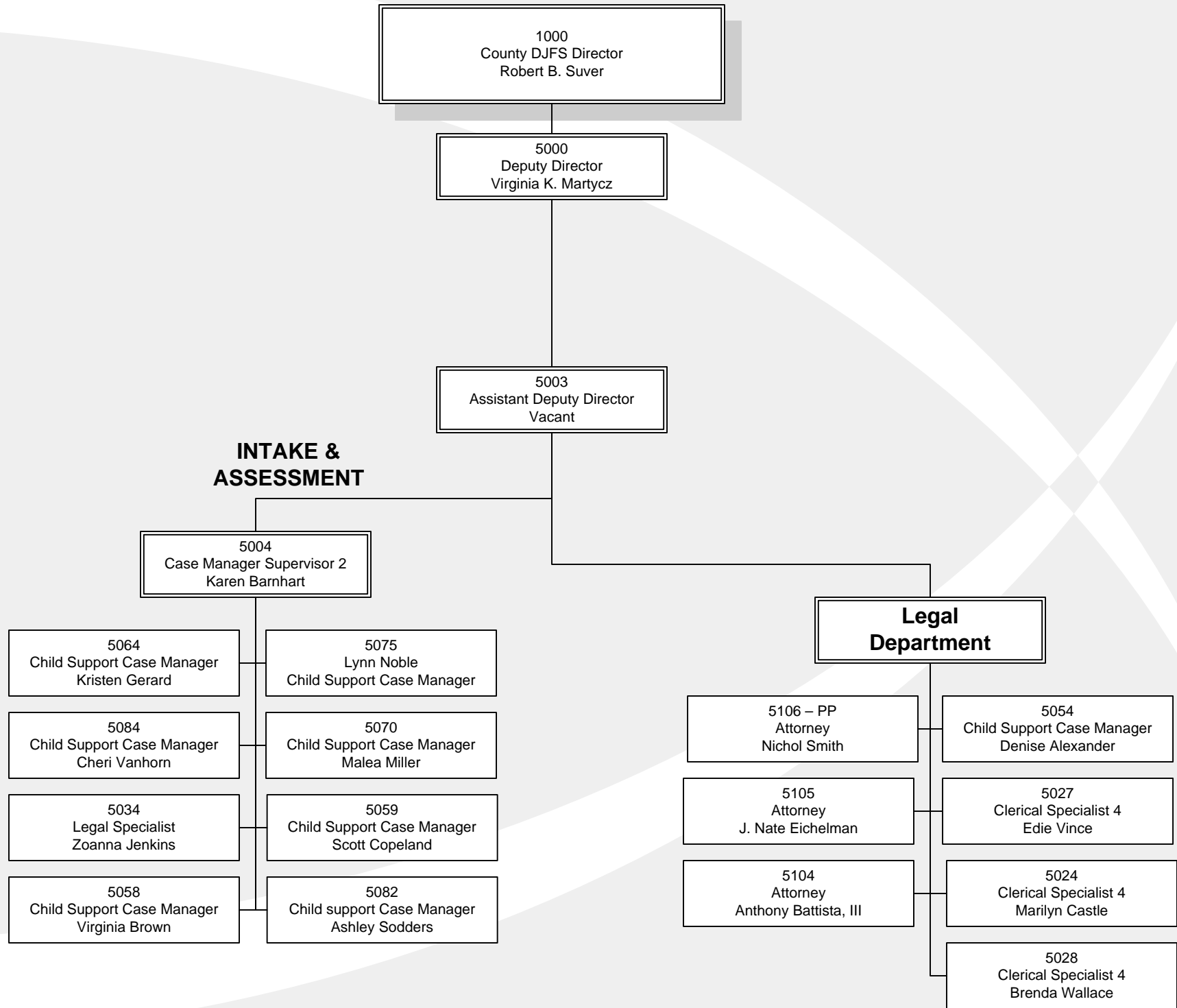
4097
Social Services Worker 2
Tracy Perks

4093 -- PP
Social Services Worker 2
Karen Mullins

4087
Social Services Worker 2
Ann Mann

4094
Social Services Worker 2
Trisha Newland

4071
Social Services Worker 2
Marci Amato



1000
County DJFS Director
Robert B. Suver

5000
Deputy Director
Virginia K. Martycz

**COLLECTIONS QUALITY
IMPROVEMENTS**

**ENFORCEMENT
SERVICES**

5007
Case Manager Supervisor 1
Pamela Davis

5009
Case Manager Supervisor 1
Margie McKenzie-Sheerin

5062
Child Support Case Manager
Constance Flannery

5085
Child Support Case Manager
Patricia Wagner

5055
Child Support Case Manager
Angela Baker

5078
Child Support Case Manager
Holly Payne

5057
Child Support Case Manager
Karla Brown

5074
Child Support Case Manager
Patricia Mosier

5017
Clerical Spec 3
Rochelle White

5015
Clerical Spec 3
Julia Gravenkemper

5067
Child Support Case Manager
Diana Hernandez

5037
Mary Hall
Unit Support Worker 2

5072
Child Support Case Manager
Christina Montgomery

5066
Child Support Case Manager
Marilyn Harper

5056
Child Support Case Manager
Sharon Mitchell

