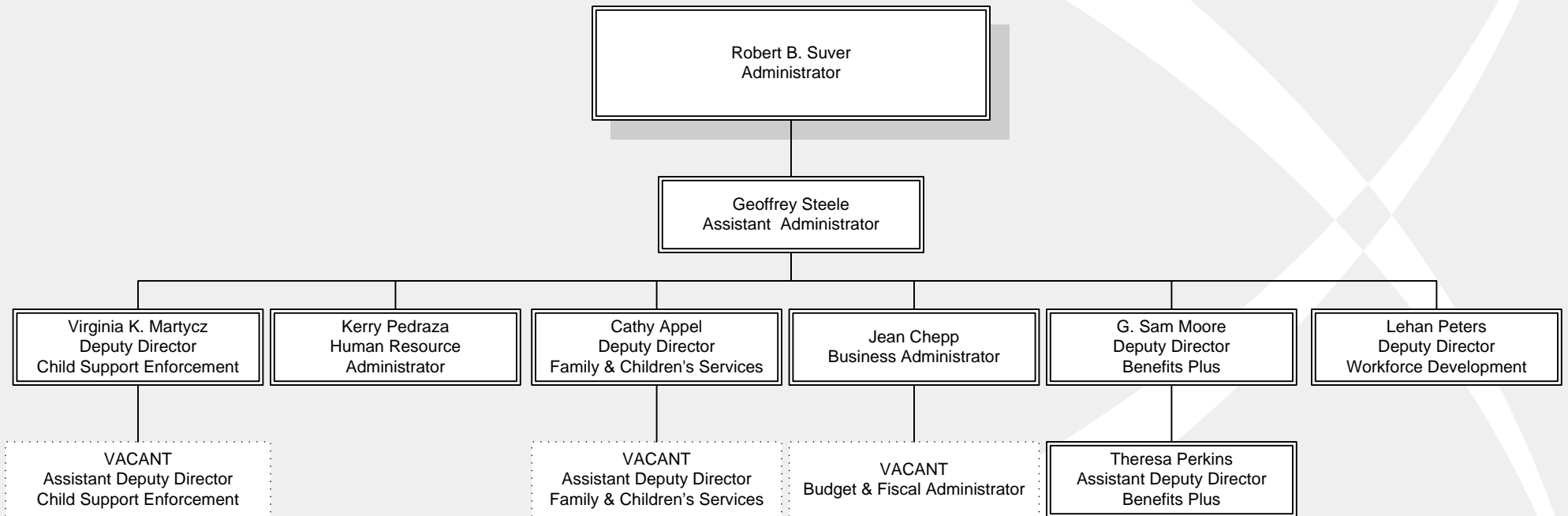


Job & Family Services of Clark County *Administrative Table of Organization*



1000
County DJFS Administrator
Robert B. Suver

1043
Administrative Assistant
Robin Maynard

HUMAN RESOURCES

ACCOUNTING

1009
Kerry Pedraza
Director of Human Resources

1012
Business Administrator
Jean Chepp

1064
Program Evaluator
Erin Thomas-Brodine

1013
Fiscal Supervisor
Rebecca Yerian

1052
Human Resources Officer 2
VACANT

1049
Human Resources Officer 1
Linda Turner

1050
Human Resources Officer 1
VACANT

1051
Human Resources Officer 1
Holly McHenry

1110 - I
Training Officer 2
VACANT

1058 -- I
Program Specialist
VACANT

3147
Training Officer 2
Cherry Cydrus

1155-- PT
Mail Clerk/Messenger
VACANT

1011
Budget Officer Supervisor
Robert Severt

1132
Budget Officer
Hope Smiddy

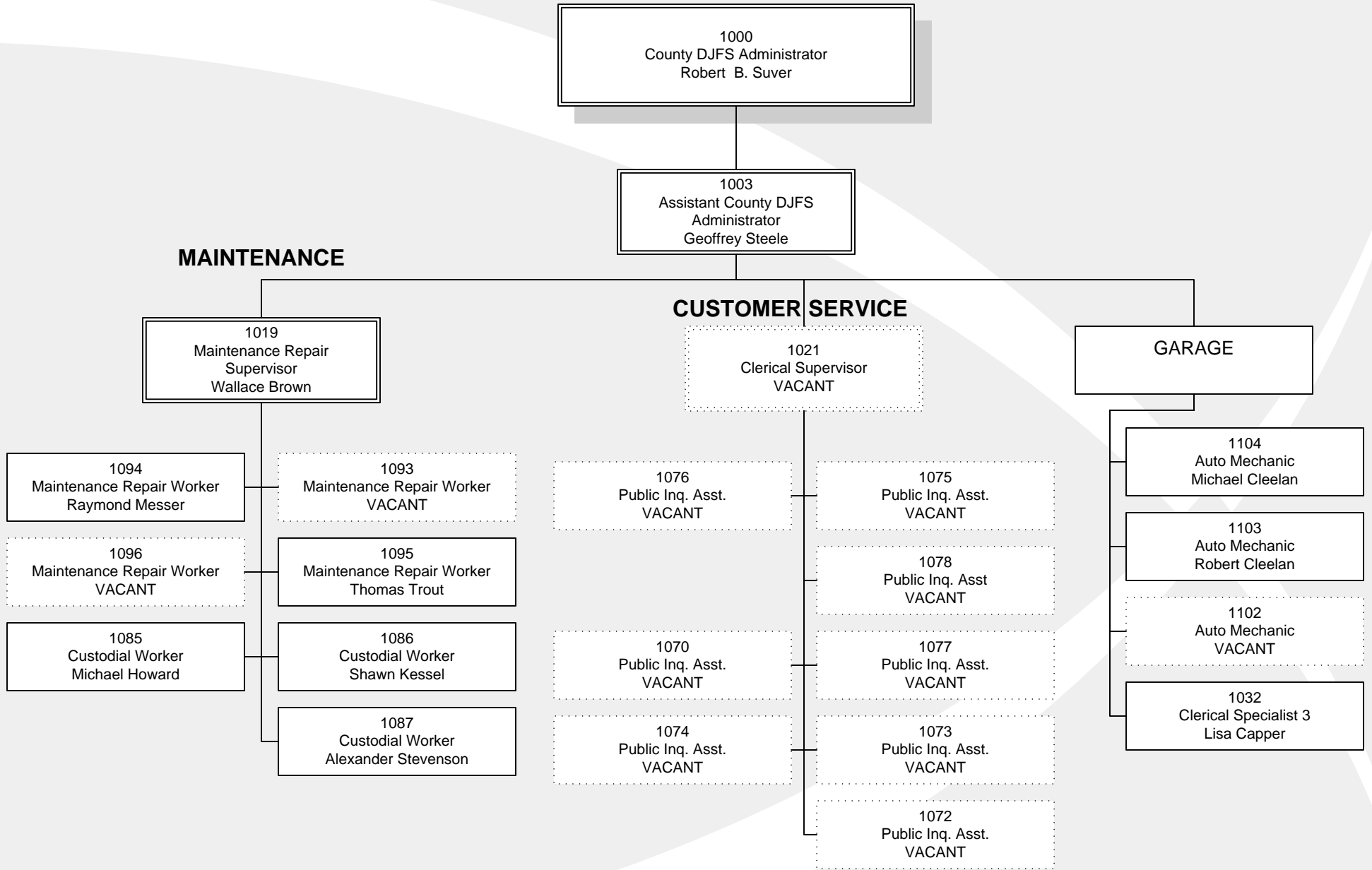
1042
Administrative Assistant
Vacant

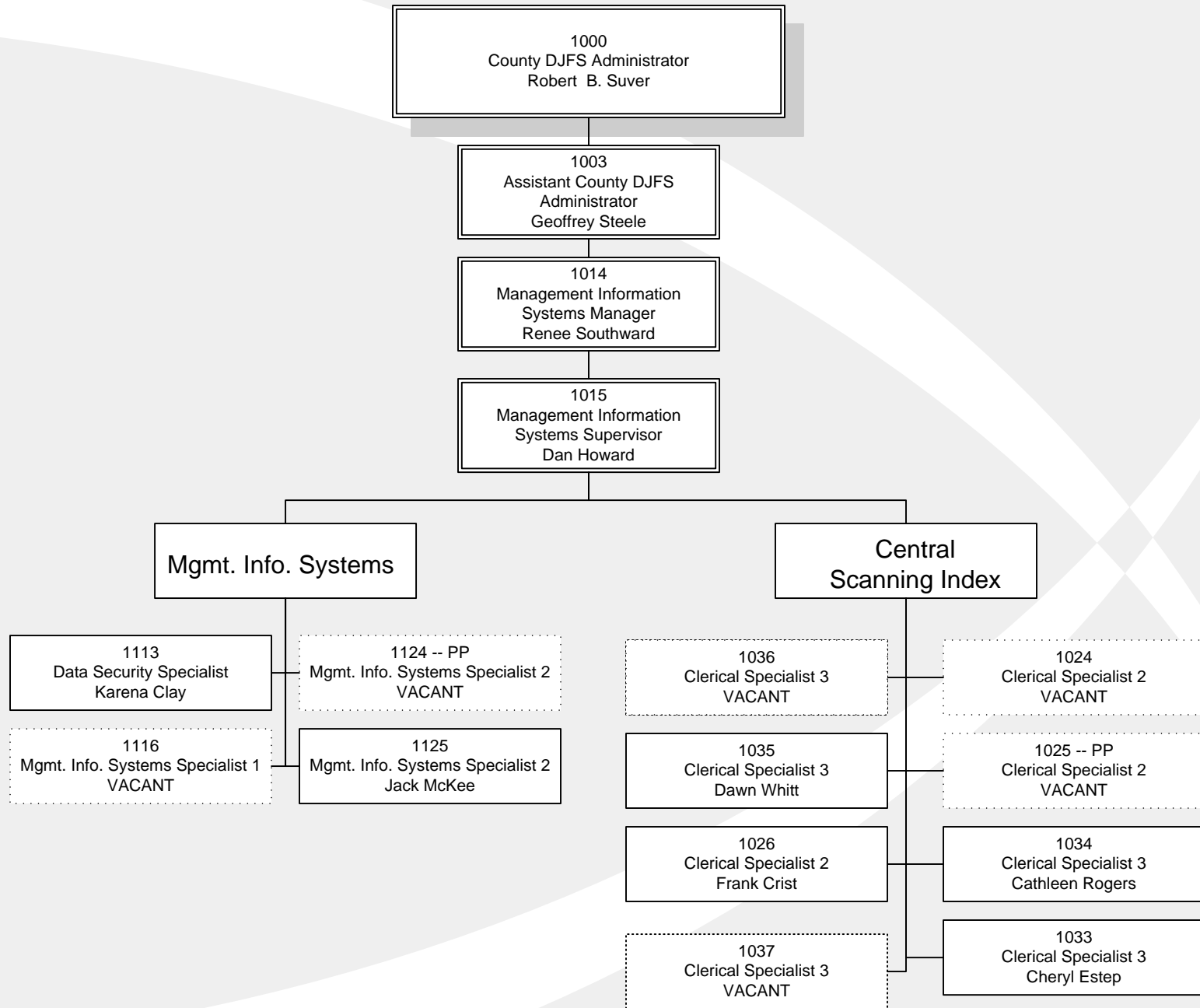
1133
Budget Officer
Vicki Roberts

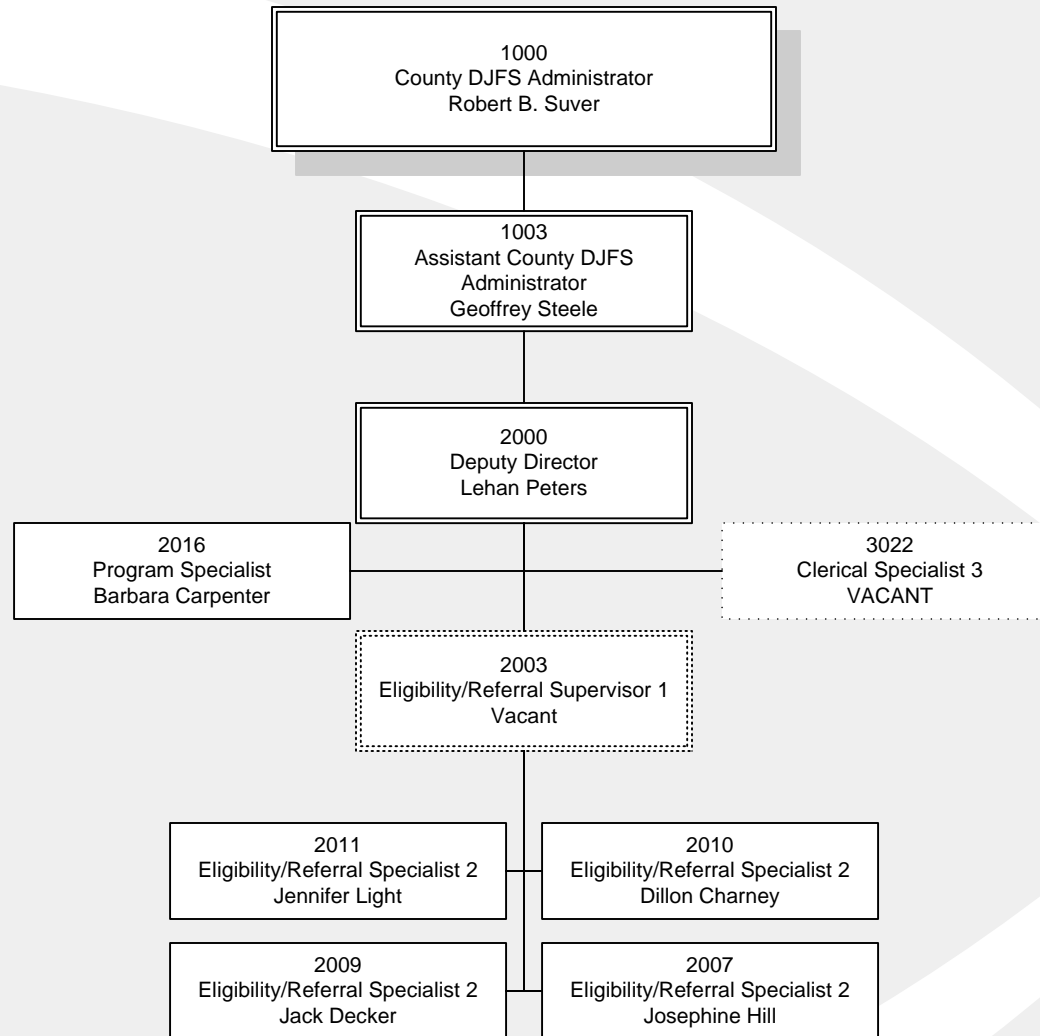
1130
Budget Officer
Carla Allender

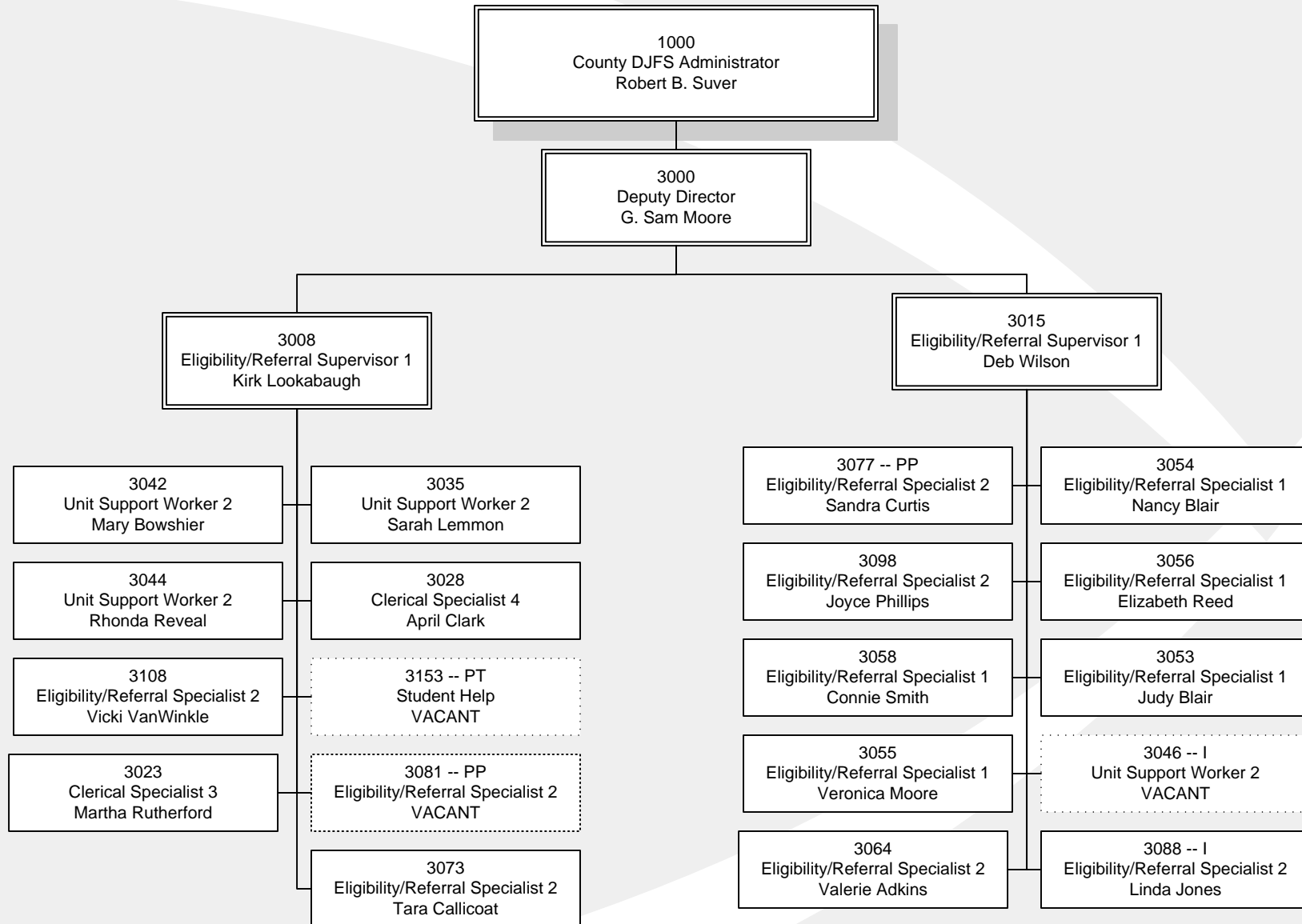
1134
Budget Officer
Nicia Burton

1131
Budget Officer
Leitha Embry

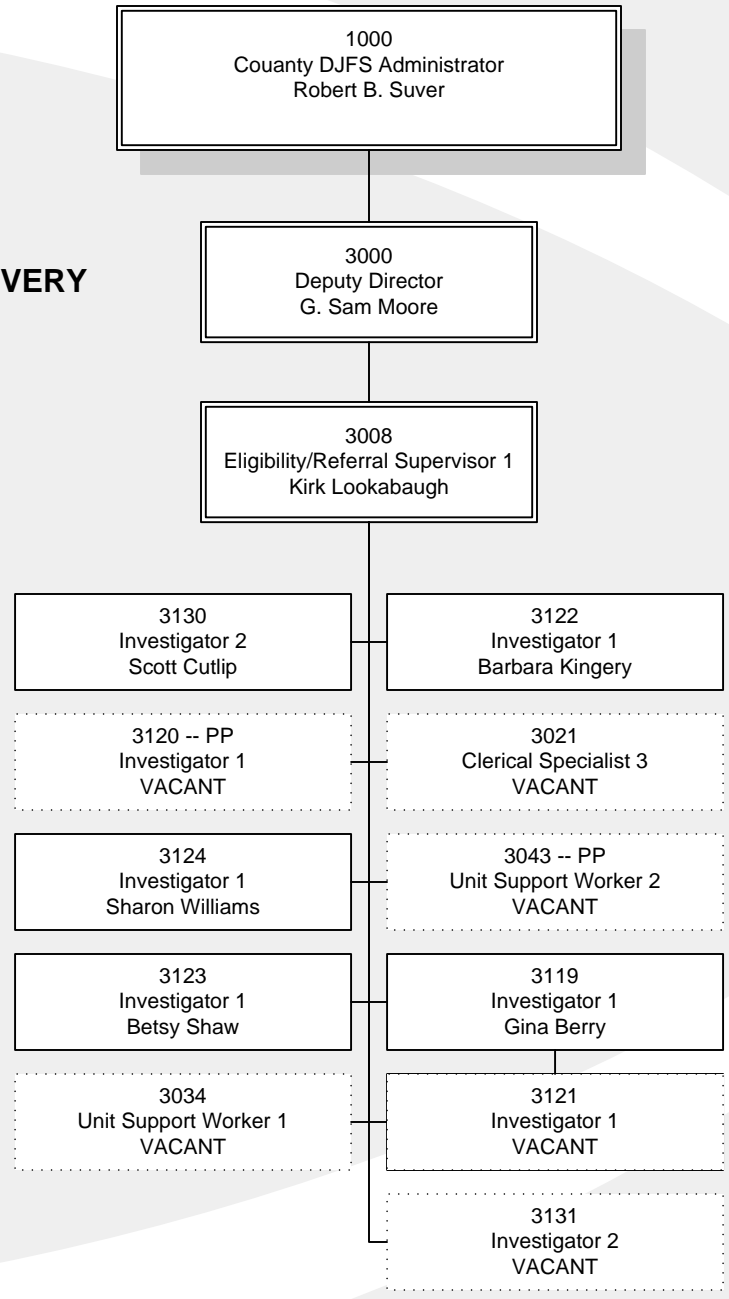


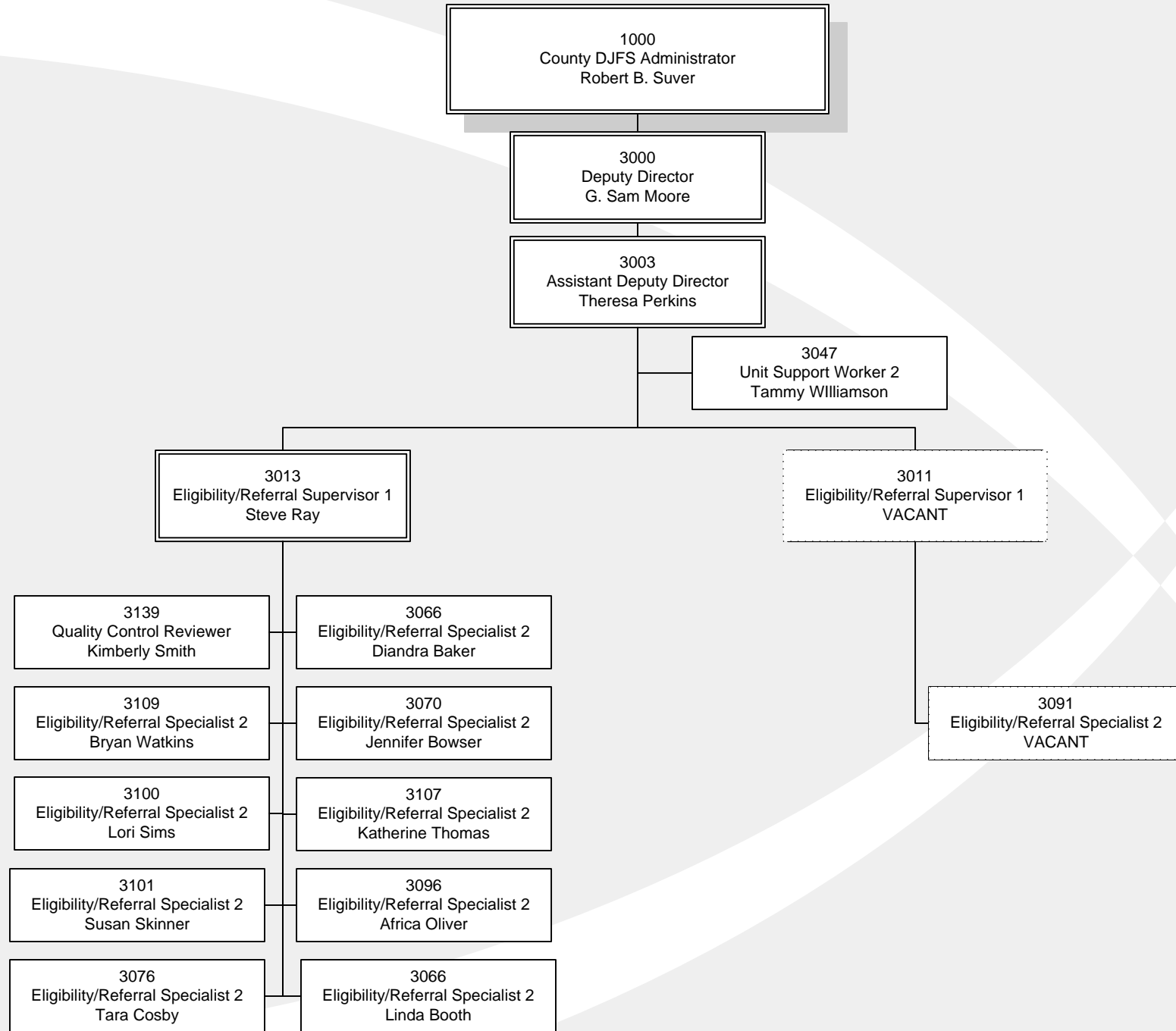


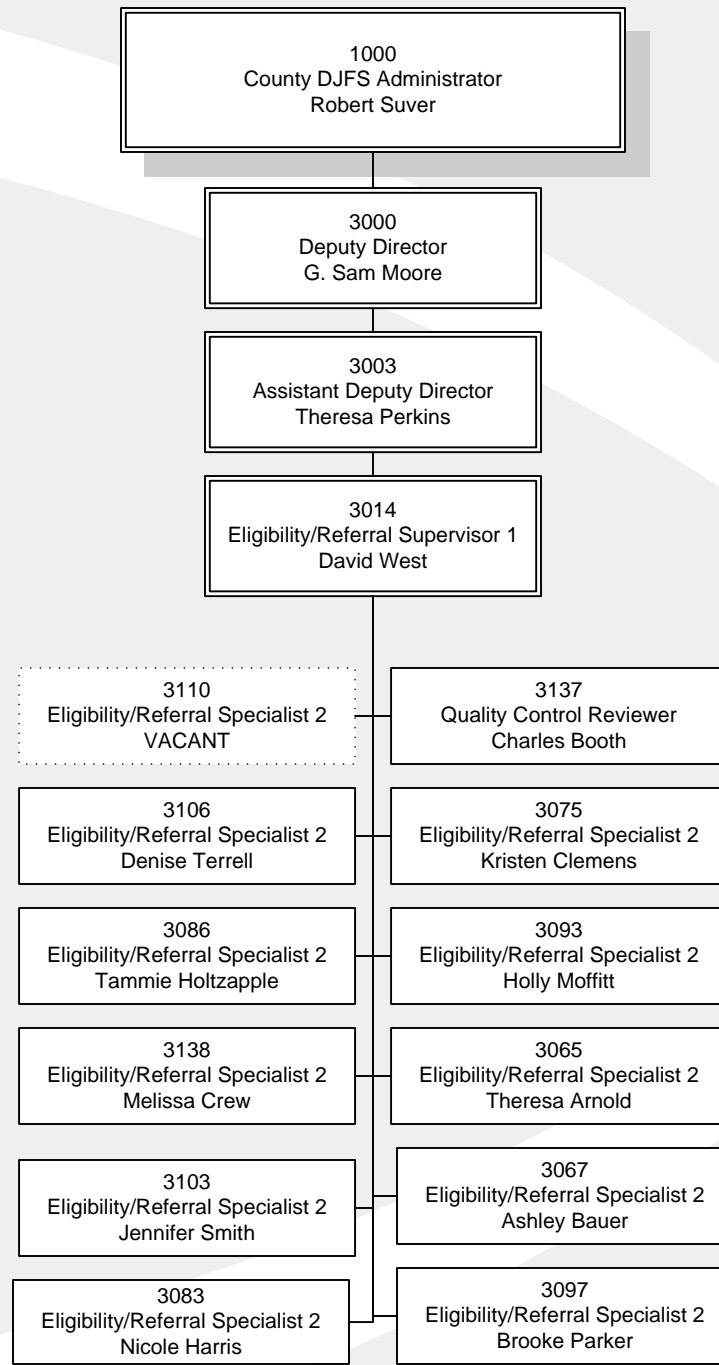




BENEFIT RECOVERY







1000
County DJFS Administrator
Robert B. Suver

3000
Deputy Director
G. Sam Moore

3003
Assistant Deputy Director
Theresa Perkins

3016
Eligibility/Referral Supervisor 1
Cheryl Steinmetz

3009
Eligibility/Referral Supervisor 1
Melanie Gersbacher

3072
Eligibility/Referral Specialist 2
Nicholas Brodine

3102
Eligibility/Referral Specialist 2
Billie Smith

3113
Eligibility/Referral Specialist 2
Sabrina Whitt

3079
Eligibility/Referral Specialist 2
Camille Gibson

3078
Eligibility/Referral Specialist 2
Diana Foster

3087
Eligibility/Referral Specialist 2
Rebecca Howard

3095
Eligibility/Referral Specialist 2
Melissa Moore

3104
Eligibility/Referral Specialist 2
Lana Stewart

3071
Eligibility/Referral Specialist 2
Shirley Bradford

3074
Eligibility/Referral Specialist 2
VACANT

3080
Eligibility/Referral Specialist 2
VACANT

3059
Eligibility/Referral Specialist 1
Kelly Beller

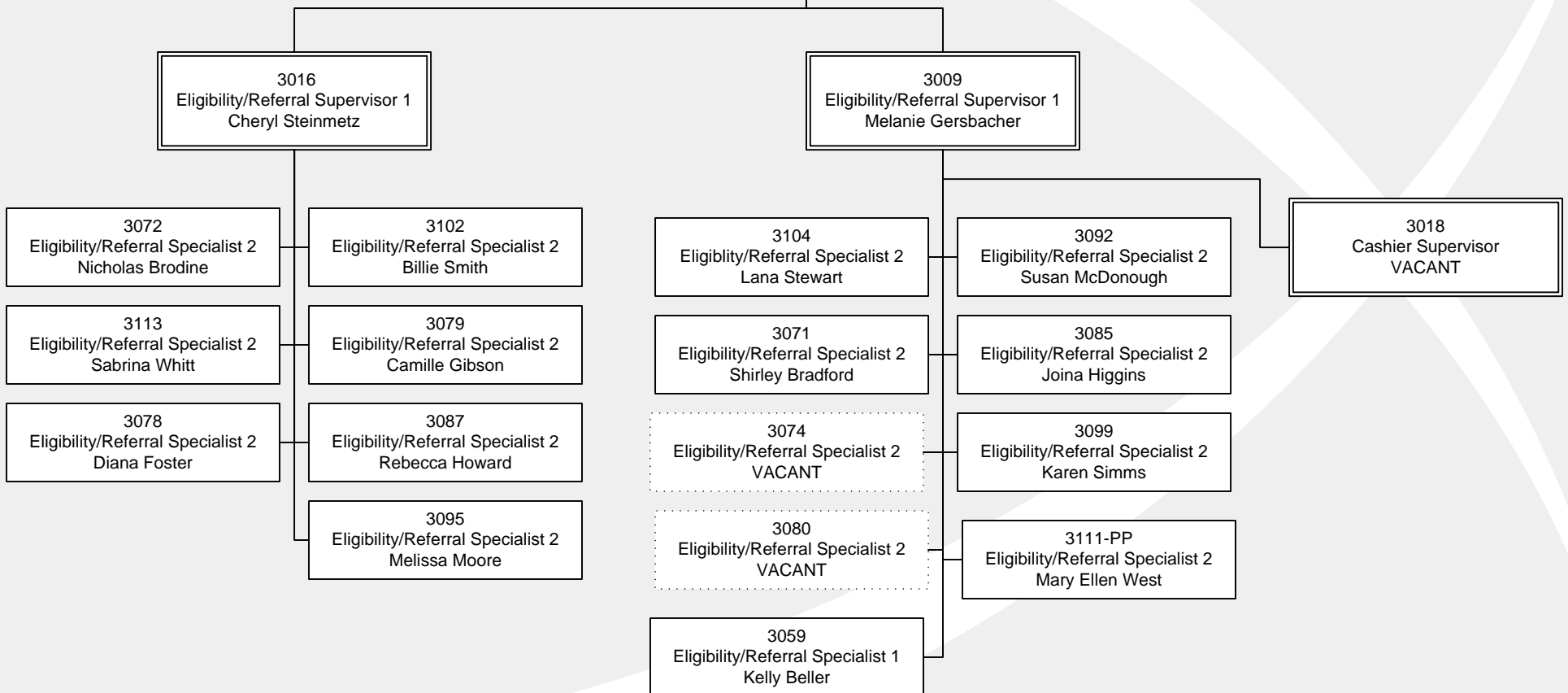
3092
Eligibility/Referral Specialist 2
Susan McDonough

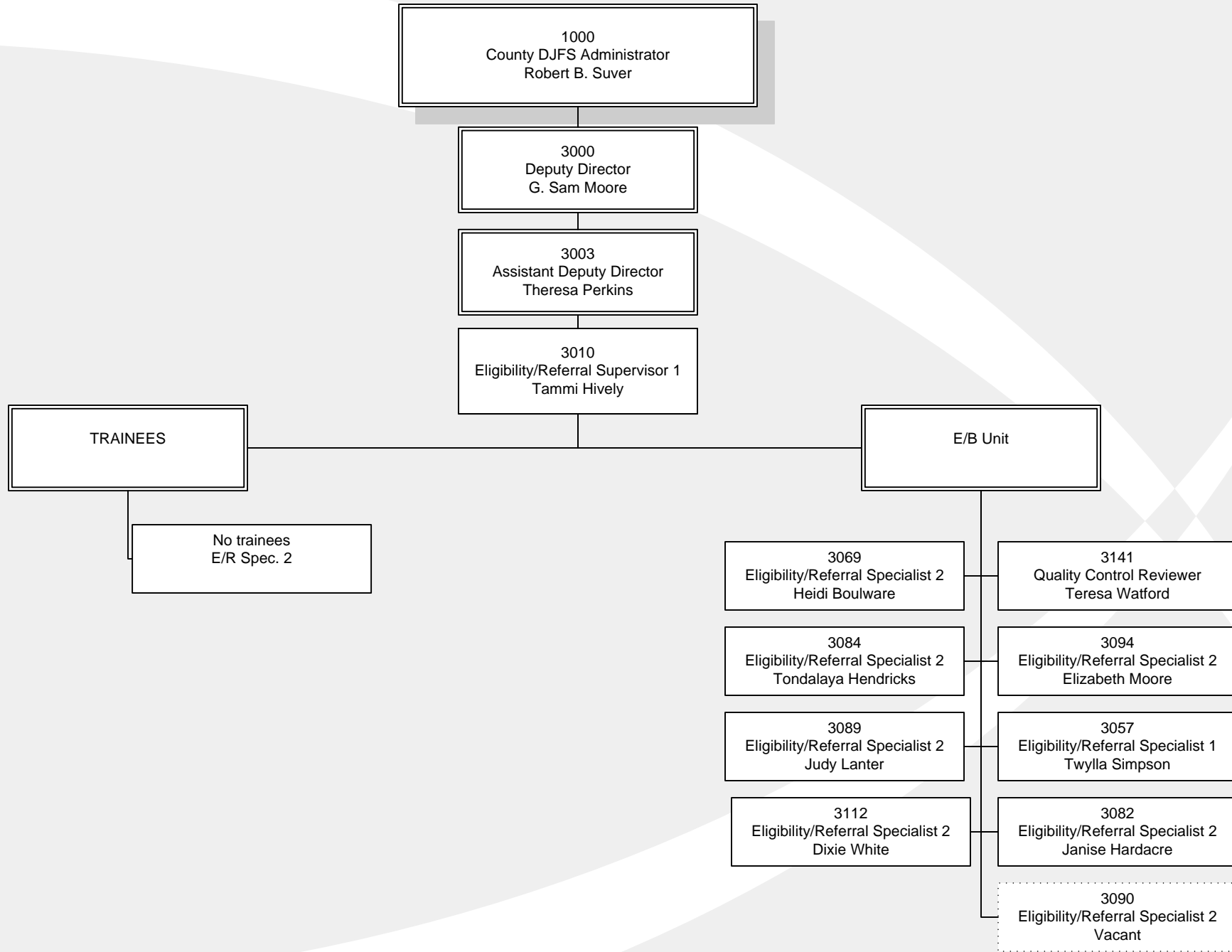
3085
Eligibility/Referral Specialist 2
Joina Higgins

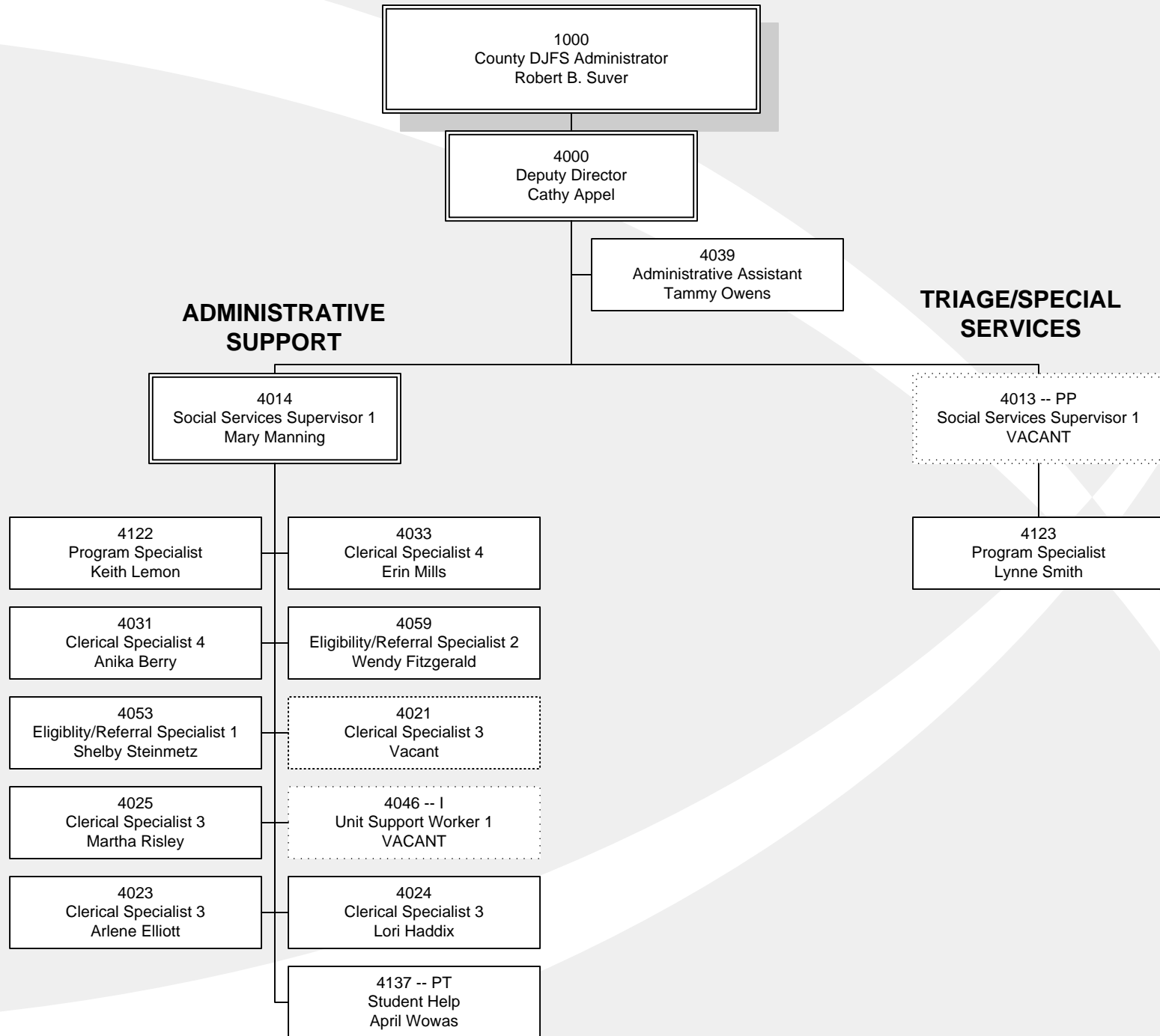
3099
Eligibility/Referral Specialist 2
Karen Simms

3111-PP
Eligibility/Referral Specialist 2
Mary Ellen West

3018
Cashier Supervisor
VACANT







1000
County DJFS Administrator
Robert B. Suver

4000
Deputy Director
Cathy Appel

4003
Assistant Deputy Director
VACANT

**INTERVENTION - COMMUNITY
BASED**

**INVESTIGATION - ASSESSMENT
APS**

4006
Social Services Supervisor 1
Angelia Beedy

4007
Social Services Supervisor 1
Denise Estep

4009
Social Services Supervisor 1
Stefania Falke

4081
Social Services Worker 2
Jamie Fricke

4106
Social Services Worker 2
Regina Smith

4074
Social Services Worker 2
Stacie Bowermeister

4077
Social Services Worker 2
Mark Cole

4107
Social Services Worker 2
Kimberly Speakes

4083
Social Services Worker 2
Danielle Harper

4088
Social Services Worker 2
Lesley Manuel

4104
Social Services Worker 2
Traci Schwartz -Sullivan

4089
Social Services Worker 2
VACANT

4072
Social Services Worker 2
Jessica Barger

4073
Social Services Worker 2
Denise Barnhart

4090
Social Services Worker 2
Courtney McKinnon

4110
Social Services Worker 2
Brenna Theiss

4108
Social Services Worker 2
Julie Sullivan

4086
Social Services Worker 2
Chad Lough

4084
Social Services Worker 2
Gladys Islam

4082
Social Services Worker 2
Dorothy George

4114
Social Services Worker 2
Karen Wright

4103
Social Services Worker 2
Christopher Schulz

4111
Social Services Worker 2
Monique Timmons

4113
Social Services Worker 2
Jamie Williams

4045
Unit Support Worker 1
VACANT

1000
County DJFS Administrator
Robert B. Suver

4000
Deputy Director
Cathy Appel

4003
Assistant Deputy Director
VACANT

INVESTIGATION - ASSESSMENT

PERMANENCY PLANNING

4008
Social Services Supervisor 1
Angela Evans

4015
Social Services Supervisor 1
Faith McDonald

4012
Social Services Supervisor 1
VACANT

4109
Social Services Worker 2
VACANT

4095
Social Services Worker 2
Barbara Otto

4096
Social Services Worker 2
Amanda Pace

4102
Social Services Worker 2
Sue Russell

4076
Social Services Worker 2
Megan Brown

4112
Social Services Worker 2
Sarah Wiedeke

4075
Social Services Worker 2
Karol Boyer

4092
Social Services Worker 2
Patti Moseley

4080
Social Services Worker 2
Heather Eggenpiller

4115
Social Services Worker 2
Barbara Yerian

4091
Social Services Worker 2
Susan McLean-Downing

4105
Social Services Worker 2
Vacant

1071
Public Inq. Asst.
Dianna Laskovics

4099
Social Services Worker 2
VACANT

1000
County DJFS Administrator
Robert B. Suver

4000
Deputy Director
Cathy Appel

4003
Assistant Deputy Director
VACANT

FAMILY SUPPORT SERVICES

4011
Social Services Supervisor 1
Teresa Kiley

4121
Program Specialist
Kristie Heckman

4032 -- PP
Clerical Specialist 4
VACANT

4100
Social Services Worker 2
Janine Rouch

4129
Activities Therapist
Jerome Kynard

4022
Clerical Specialist 3
Michelle Chaney

4065
Social Services Worker 1
Karen Slattery

4010
Social Services Supervisor 1
Wendy Holt

4101
Social Services Worker 2
Barbara Rudy

4078
Social Services Worker 2
VACANT

4085
Social Services Worker 2
Marsha Jenkins

4079
Social Services Worker 2
Kim Dysert

4097
Social Services Worker 2
Tracy Perks

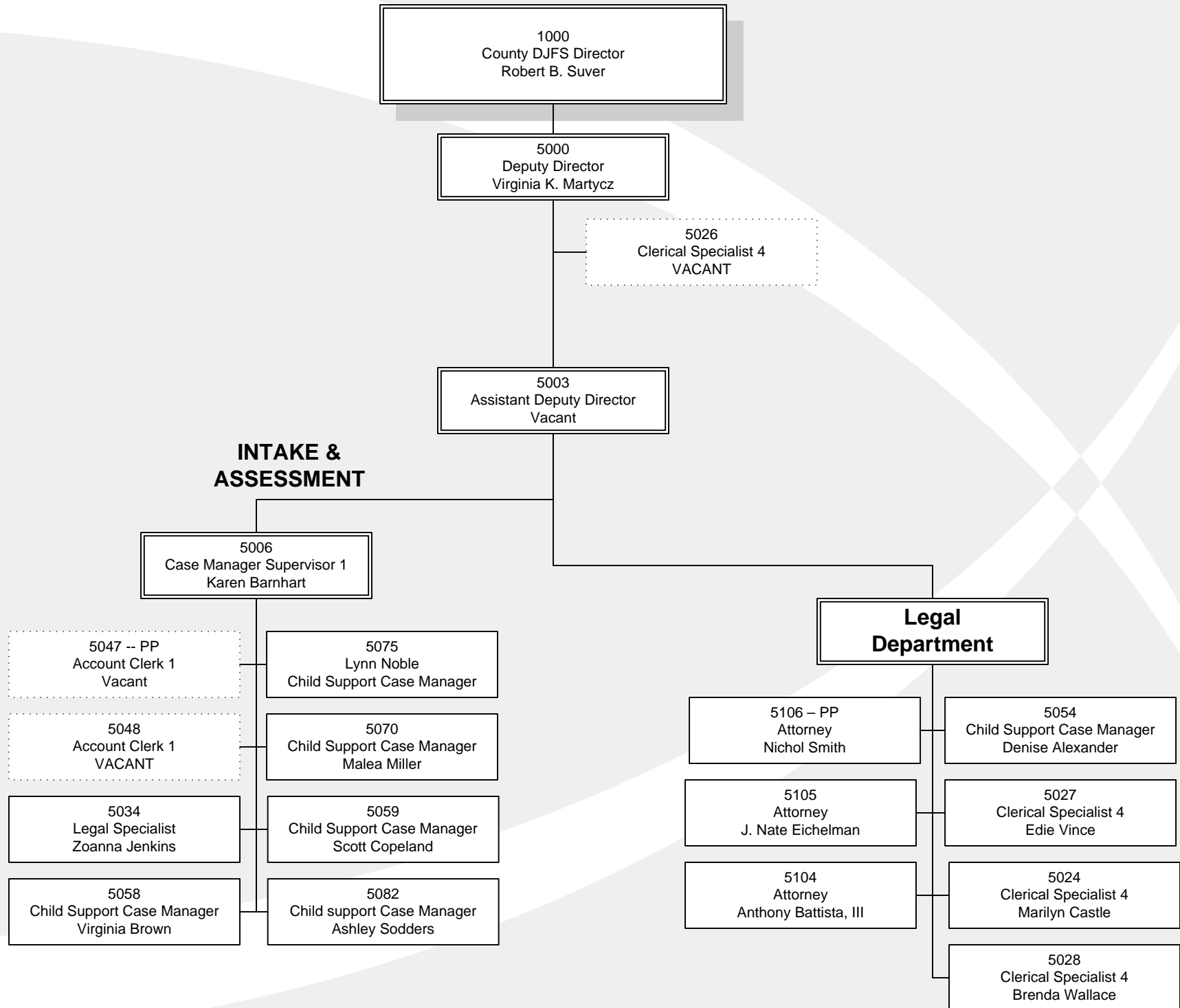
4098
Social Services Worker 2
Donna Phipps

4093 -- PP
Social Services Worker 2
Karen Mullins

4087
Social Services Worker 2
Ann Mann

4094
Social Services Worker 2
Trisha Newland

4071
Social Services Worker 2
Marci Amato



1000
County DJFS Director
Robert B. Suver

5000
Deputy Director
Virginia K. Martycz

**COLLECTIONS QUALITY
IMPROVEMENTS**

**ENFORCEMENT
SERVICES**

5007
Case Manager Supervisor 1
Pamela Davis

5009
Case Manager Supervisor 1
Margie McKenzie

5081
Child Support Case Manager
VACANT

5062
Child Support Case Manager
Constance Flannery

5055
Child Support Case Manager
Angela Baker

5085
Child Support Case Manager
Patricia Wagner

5078
Child Support Case Manager
Holly Payne

5057
Child Support Case Manager
Karla Bray-Townsend

5074
Child Support Case Manager
Patricia Mosier

5092
Public Inq Asst
VACANT

5084
Child Support Case Manager
Cheri VanHorn

5067
Child Support Case Manager
Diana Hernandez

5083
Child Support Case Manager
VACANT

5023
Clerical Spec 4
Michelle Bender

5072
Child Support Case Manager
Christina Montgomery

5066
Child Support Case Manager
Marilyn Harper

5064
Child Support Case Manager
Kristen Gerard

